



9 Queen Marys Drive

New Haw, Addlestone, KT15 3TS

Offers in excess of £435,000

OIEO £435,000

Offered to the market with no onward chain is this three bedroom semi-detached bungalow. Located moments from Grange Infants and New Haw middle schools, only few minutes walk from New Haw village shops and around twenty minutes walk of West Byfleet mainline station to London Waterloo.

Accommodation consists of three bedrooms and a three piece shower room. Both the fitted kitchen and the reception room open onto the south aspect garden.

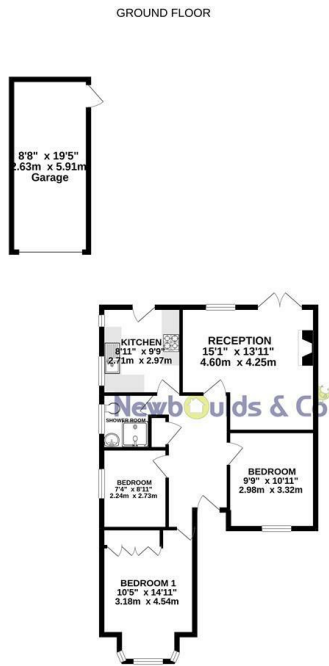
Externally there is off street parking to the front and shared driveway to the rear to access the garage.

A fantastic opportunity for anyone looking to downsize to single level accommodation or a family that want to be close to the highly regarded schools and have potential to extend, subject to planning permission.

Viewing

Please contact our Shepperton - Sales Office on 01932232927 if you wish to arrange a viewing appointment for this property or require further information.

Floor Plan

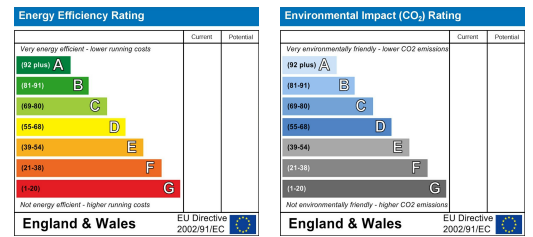


Whilst every attempt has been made to ensure the accuracy of the floorplan contained here, measurements of doors, windows, stairs and any other parts are approximate and no responsibility is taken for any error. Dimensions of this building, the plot, the location, perimeter, etc. are intended to be used as such for any prospective purchaser. The services, systems and appliances shown have not been tested and no guarantee can be given as to their availability or efficiency for the given. Made with MyMapa ©2021

Area Map



Energy Efficiency Graph



These particulars, whilst believed to be accurate are set out as a general outline only for guidance and do not constitute any part of an offer or contract. Intending purchasers should not rely on them as statements of representation of fact, but must satisfy themselves by inspection or otherwise as to their accuracy. No person in this firm's employment has the authority to make or give any representation or warranty in respect of the property.